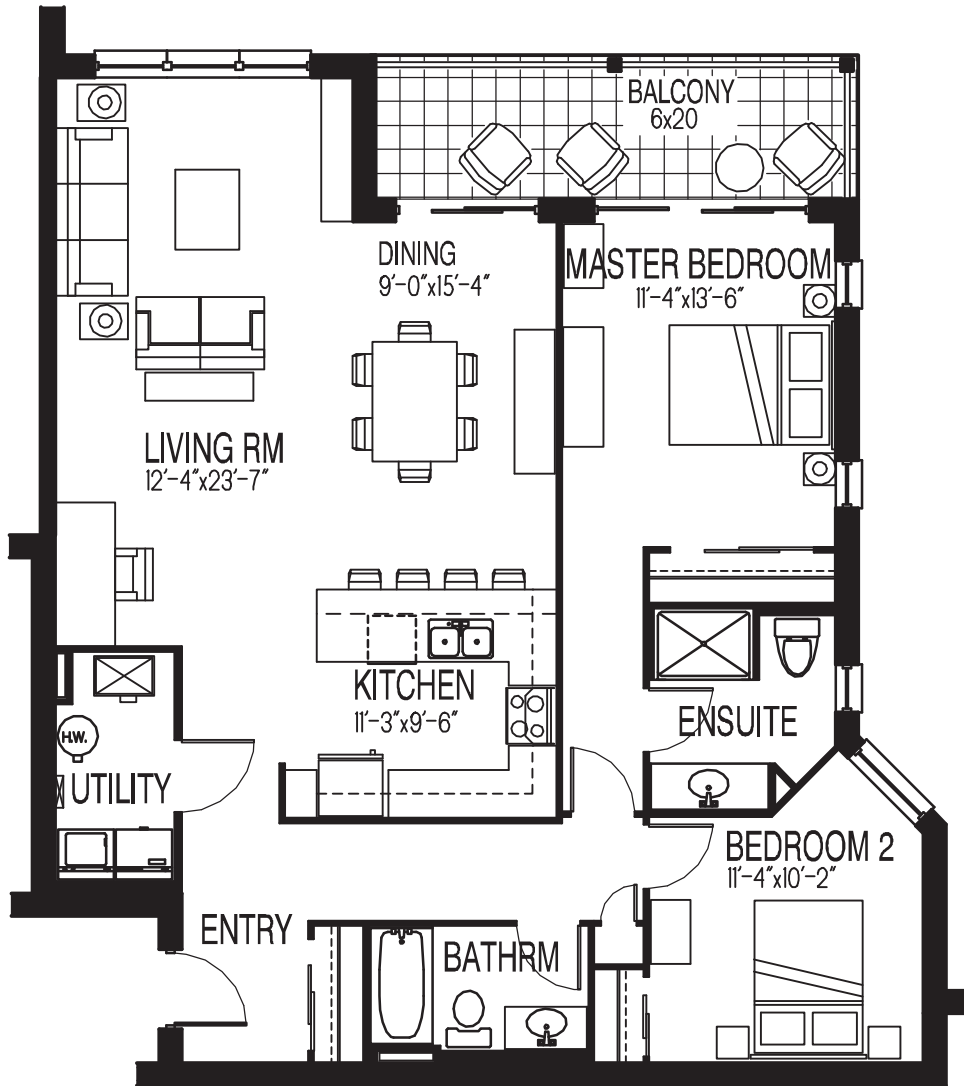


The Islander

1320 sq/ft



Phase II



Features

Facing Muskoka River

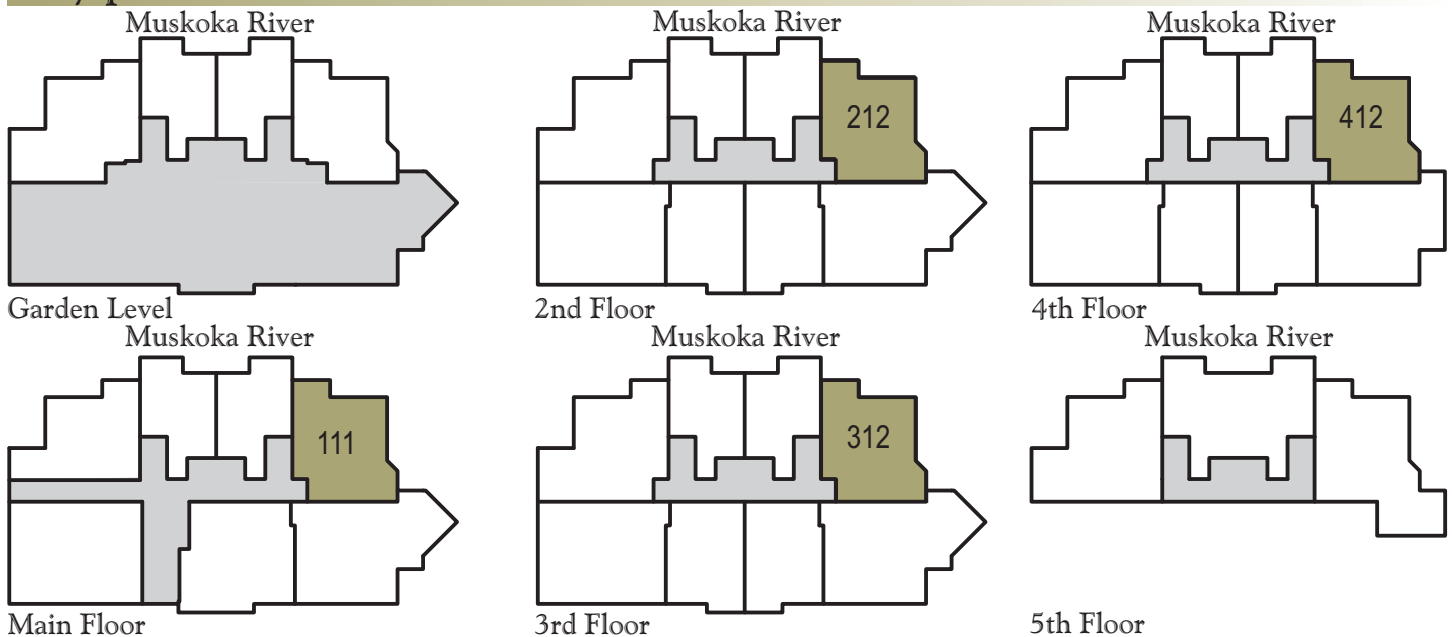
2 Bedroom

Master Bedrm. with Balcony

Open concept living

9' wide window in Living Room.

Key plans



Artist's Concept Only - All measurements and specifications are approximate and subject to change at the builders discretion. Actual construction may not conform to this design concept. E.& O.E.